



Sudbury Community Hub

Room Hire

Price Information

March 2024 - April 2025

Training/Meeting Room

Training Room:

Facilities: Large TV for laptop connection,
refreshments of tea/ coffee included

Layout: Classroom, seating around a large table

Room Capacity: maximum 12 people

Availability: Can be made available on request

Price:

£20.00 per hour

£50.00 per half day (3.5 hours)

£90.00 per full day (7 hours)



Meeting Room

Conference Room:

Facilities:

Refreshments of tea/ coffee included

Layout: Meeting Room

Room Capacity: maximum 6 people

Availability: Mon – Fri 9am – 3pm.

Price:

£15.00 per hour

£40.00 per half day (3.5 hours)

£75.00 per full day (7 hours)



Sensory Room:

Facilities: Sensory equipment

Layout: 1 room with waterbed, bubble tubes, fibre optic lights and interactive floor projector.

Room Capacity & Measurements: maximum 6 people

Availability: Mon – Fri 9am-4pm via booking system.

Price:

£60 Exclusive hourly rate or £30 shared rate. Plus VAT.



Training Kitchen

Facilities: Kitchen equipment & facilities.

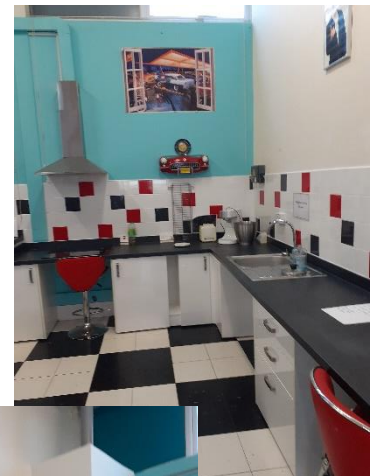
Layout: 50's themed diner with seating area and kitchen area, some lower surfaces and hob for accessibility.

Room Capacity & Measurements: maximum 10 people

Availability: limited availability evenings and some weekends.

Price:

£30 exclusive hourly rate or £20 shared rate. Plus VAT.



Main Hall:

Facilities: Large TV, tables and chairs, toilet facilities, kitchen facilities at additional cost of £20.

Layout: Flexible – sports/exercise classes, children's parties etc

Room Capacity & Measurements: Maximum 40-50 people depending on usage.

Availability: Some weekends/evenings only

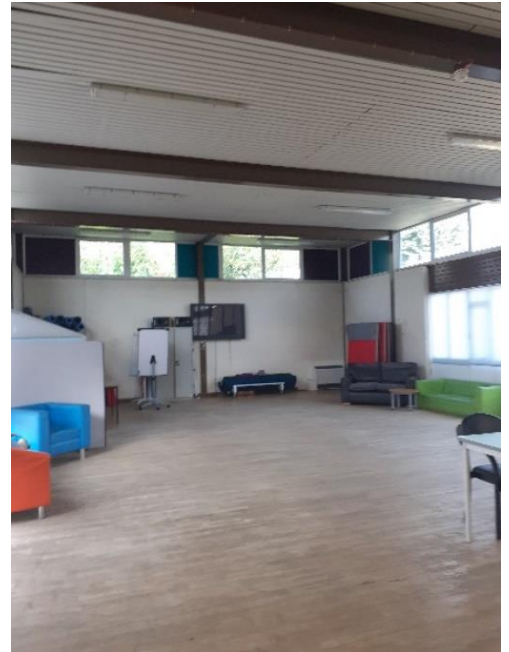
Price:

£15.00 per hour

£50.00 a half day 9am -12.30pm

£100 a whole day 9am – 4pm

£80.00 an evening 6pm -11.30pm



Whole Hub Hire:

Availability: Some weekends/evenings only

Price:

£150 per day all areas (except Sensory Room)

£200 per day including Sensory Room

(plus vat)

For any further information please contact the Sudbury Hub on 01787 464380
or e-mail info@leadinglives.org.uk